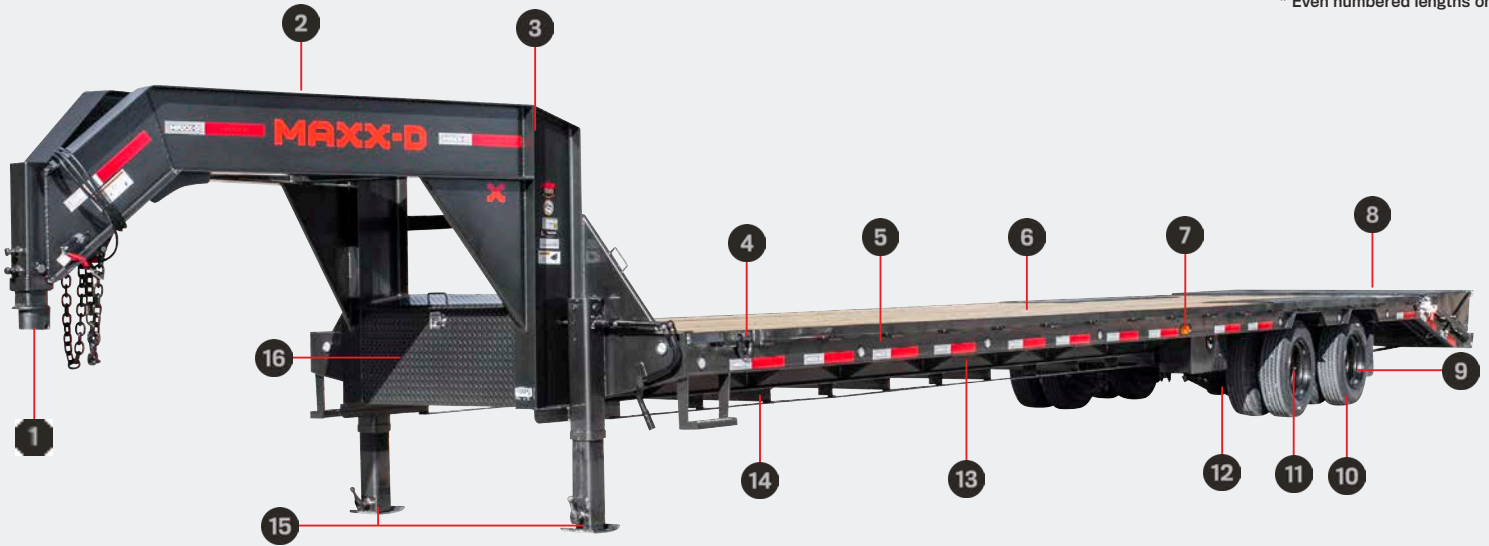


AVAILABLE SIZES

WIDTHS	LENGTHS
102"	30'-40'

* Even numbered lengths only.

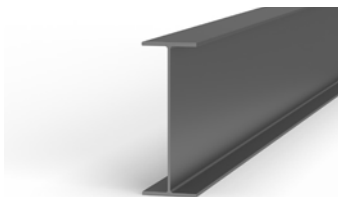


STANDARD FEATURES

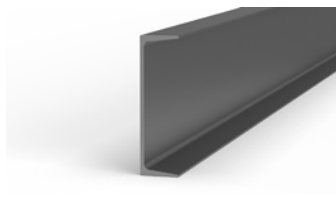
- 1 3" 40K Square Gooseneck Coupler
- 2 Spare Tire Holder in Neck
- 3 14" x 22 lb I-Beam Neck and Risers
- 4 4 - 3/4" Bull-Nose D-Rings
- 5 8" Channel Outer Frame
- 6 2" x 8" Treated Wood Floor
- 7 NATM Compliant Flushmount LED Lights
- 8 8' Rear Access Slide-In Ramps ¹
- 9 17.5" Dual Black Steel Wheels
- 10 ST215/75R17.5 (H) Radial Tires
- 11 2 - 16K Electric/Hydraulic Brake Axles
- 12 Heavy Duty Adjustable Suspension
- 13 14" x 22lb I-Beam Main Frame w/Bridge and Torque Tube
- 14 4" Channel Crossmembers on 12" Centers
- 15 2 - 2-Speed Jost Drop-Leg Jacks
- 16 Front Full Width Diamond Plate Toolbox

AVAILABLE OPTIONS

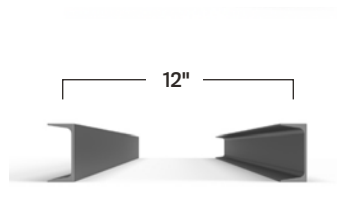
- 2 - Hydraulic Jacks
- 5' Dovetail/MAXX-D Out Ramps
- 3 - 12K Electric/Hydraulic Brake Axles
- Ridewell Air Suspension
- 2" x 8" Treated Oak Floor
- Blackwood® Pro Lumber
- Extra 3/4" Bull-Nose D-Rings
- Sliding Ratchet Bar W/1 Ratchet Per 4'
- Dunnage Box
- Side Mount Toolbox



Large 14" x 22 lb I-Beam Frame



8" Channel Outer Frame



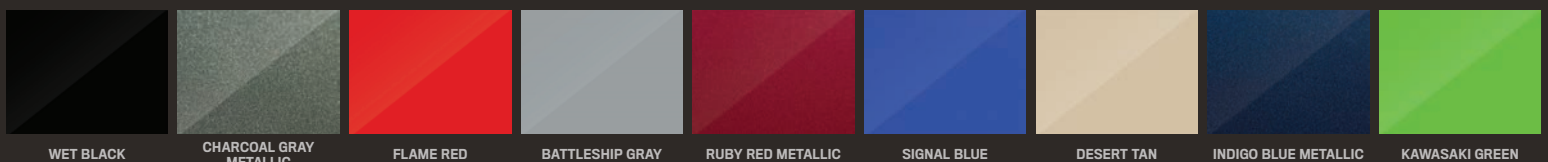
4" Channel Crossmembers on 12" Centers



Heavy Duty Adjustable Suspension

¹ Shown with Optional 5' Dove & MAXXD-OUT Ramps

COLOR OPTIONS



WET BLACK

CHARCOAL GRAY
METALLIC

FLAME RED

BATTLESHIP GRAY

RUBY RED METALLIC

SIGNAL BLUE

DESERT TAN

INDIGO BLUE METALLIC

KAWASAKI GREEN

*Colors shown for reference only. Actual colors may vary.