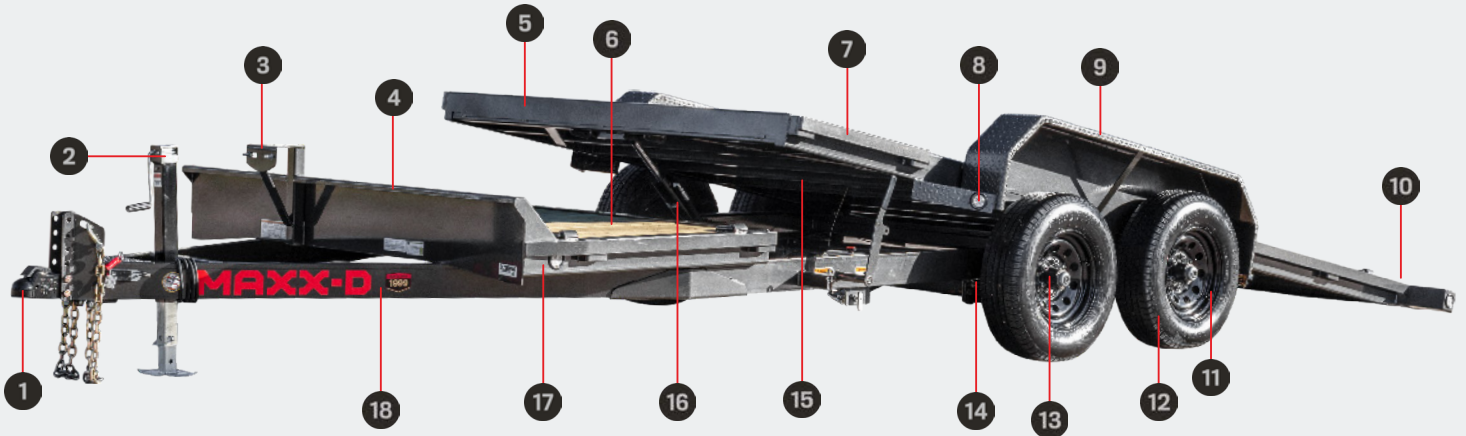


### AVAILABLE SIZES

WIDTHS	LENGTHS
83" - 102"	20' - 24'

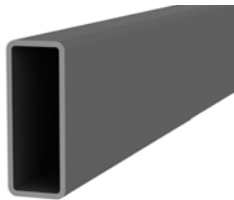


### STANDARD FEATURES

- 1 2 5/16" Adjustable Coupler
- 2 7K Drop-Leg Jack
- 3 Spare Tire Mount
- 4 2" Formed Steel Front Rail
- 5 16' Tilt Deck On All Trailer Lengths
- 6 2" x 8" Treated Wood Floor
- 7 4" x 3" x 3/16" Stake Pockets and 2" x 3/8" Rubrail
- 8 NATM Compliant Flushmount LED Lights
- 9 Double Broke Diamond Plate Fenders
- 10 Full Width Knife Edge Rear
- 11 15" Black Mod Wheels
- 12 ST225/75R15 (D) Radial Tires
- 13 1 - 5.2K Idler/1 - 5.2K Brake Axle
- 14 Torsion Spring Suspension 22.5" Up On 2 Axles
- 15 3" Channel Crossmembers On 16" Centers
- 16 Cushion Cylinder with Lock-Out Valve
- 17 5" x 2" x 3/16" Tube Main Frame
- 18 5" Channel Wrap Tongue

### AVAILABLE OPTIONS

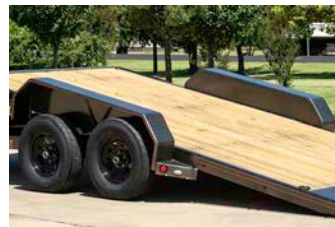
- 3" Channel Crossmembers On 12" Centers
- Blackwood® Pro Lumber
- Extra 5/8" Bull-Nose D-Rings
- Winch Plate In Front W/Winch Roller



5" x 2" x 3/16" Tubing Bed Frame



3X16 Cushion Cylinder with Lock-Out Valve

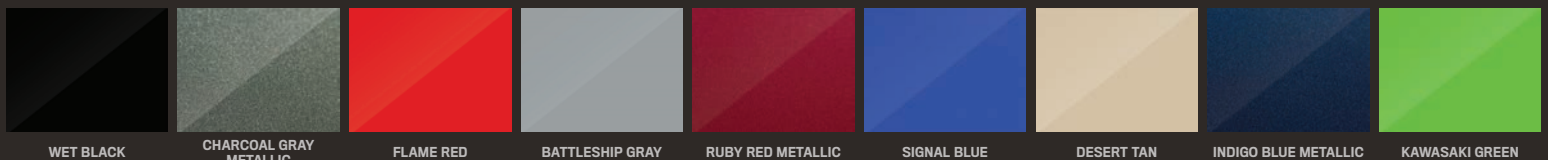


83" Bed Width and Fender Clearance



Full Width Knife Edge Rear

### COLOR OPTIONS



\*Colors shown for reference only. Actual colors may vary.