

7,000 lb
GVWR Rating

Tarp Kit
Pull-Back Trap Kit

D-Rings
1/2" Bull-Nose
D-Rings Inside Bed

Fenders
Double Broke Diamond
Plate Fenders

Crossmembers
3" Channel on 16" Centers

Sides & Bed
10 Gauge Steel
Tuff Sides™ and Floor

Hoist
10K Hydraulic Scissor Hoist

Rear Doors/Gate
Split Barn Doors and
Spreader Gate Combo

Jack
1 - 7K Drop-Leg Jack

Coupler
2 5/16" Adjustable Coupler

Wheels
15" Black Mod Wheels

Tongue
5" Channel Wrap Tongue

Tires
ST225/75R15 (D) Radial Tires

Toolbox
Formed Steel Toolbox With
Power Up & Power Down
KTI Hydraulic Pump

Frame
5" x 2" 11 Gauge Tube Frame

Axles Upgradeable To

- 2-5.2K Axles = 9,990 lb GVWR Rating

*Trailer may be shown with optional and/or outdated features.

Sizes

10' X 60" - 2.77 CU/YD

Color Options

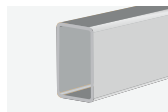


* Metallic. | The colors shown are for your reference only. Actual colors may vary.

Standard Options



Tarp Kit
Pull back tarp with
ratchet handle to easily
lock tarp in place.



Tube Frame
5" x 2" 11 gauge tubing frame
for a rigid frame with a clean
look.



Scissor Hoist
Better stability and strength with
a scissor hoist compared to
either single or double cylinders.



Tuff Sides™
NEW stronger design with a
3" cap at top of the sides.