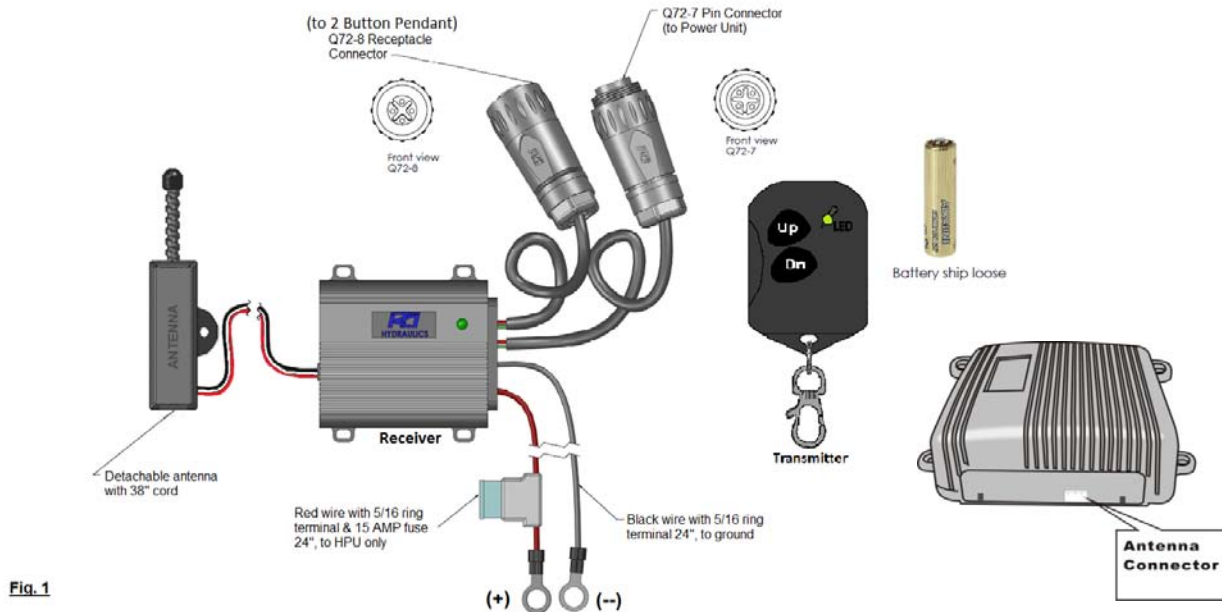


## Wireless Instruction Manual



\*\*\*\*\*Wireless Remote Comes Preprogrammed\*\*\*\*\*

### Installation

- 1.) Connect (**Q72-7**) **Pin Connector** to Power Unit. (**Fig. 1**)
- 2.) Mount **Wireless Receiver**.
  - a. Select desired mounting location preferably in a sealed box and out of harm's way.
  - b. **Antenna must** be mounted outside, not in metal box.
- 3.) Connect positive (**Red Wire**) & negative (**Black Wire**) ring terminals to **Power Units Not the Battery**. (**Fig. 1**)
  - a. Connect (+) Red wire to the same terminal on **Start Solenoid** as positive wire from battery.
  - b. Connect (-) Black wire to motor housing or to negative terminal on 2 terminal DC motor.
  - c. Insure the Power Unit is grounded directly to the negative terminal on the battery, which is the designated grounding location.
- 4.) Operate **Wireless Unit** and **Remote Pendant** to insure proper functionality.
  - a. **Up** Button or **OUT**
  - b. **Down** Button or **IN**
- 5.) Connect **Remote Pendant** to (**Q72-8**) **Receptacle Connector** on Wireless Receiver. (**Fig. 1**)

### Functions

- 1.) To turn power **ON** or **OFF**, press both buttons **Up** and **Dn** **simultaneously**. When the receiver is in OFF mode, the LED indicator will flash every 3 seconds to show that the receiver is still connected to a power source.
- 2.) This device is activated by pushing either button **Up** or **Dn** on the **Key Fob** (Transmitter).
- 3.) **20 Minute Shut-down Mode** (Receiver shuts down after being idle for 20 minutes).
  - a. Press both buttons (**Up & Dn**) down, Hold for **10 - 20 seconds** to end **Shutdown Mode**.
  - b. In **Shutdown Mode**; (**Output 2**) the Remote Pendant) is still active. (**Fig. 1**)
- 4.) Operating Frequency: **315MHz**

## Wireless Instruction Manual

### How to Program Remote Key Fob to Wireless Unit (Programming Mode)

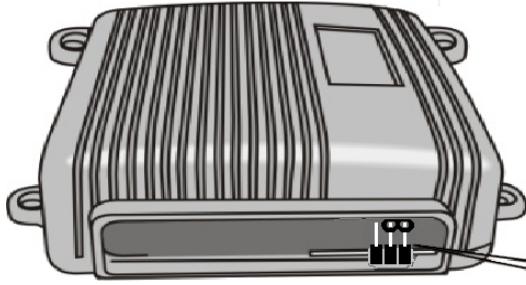
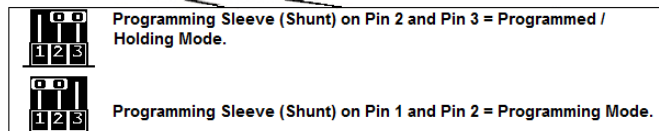


Fig. 2



- 1.) Remove wired hand control (**Remote Pendant**) to prevent accidental operation.
- 2.) Place **Programming Sleeve** (Shunt) on **Pin 1** and **Pin 2**, to activate Programming Mode. **Fig. 2,3,4**

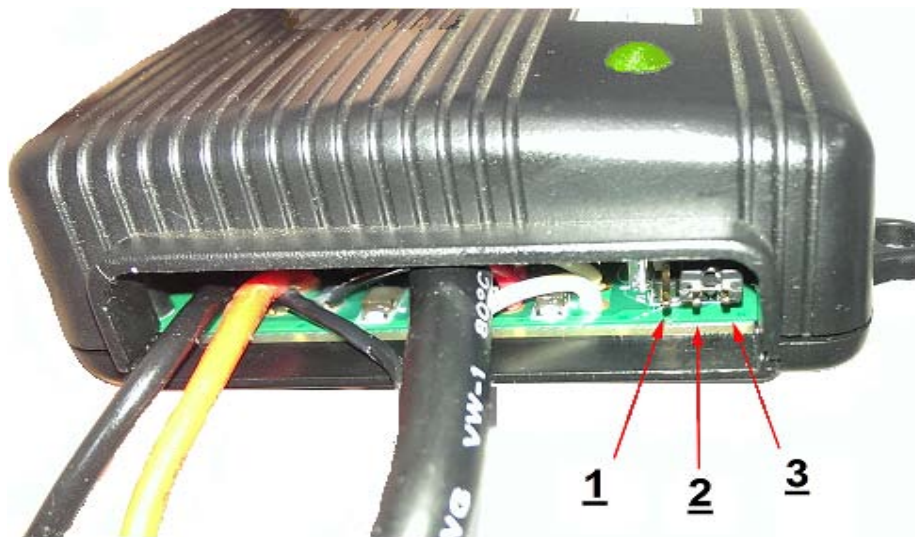


Fig. 4

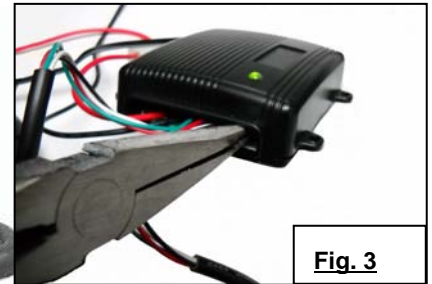


Fig. 3

- 3.) When in **Programming Mode**, the LED indicator will flash **Red** to show status. Press any button on the Key Fob, when the receiver has stored the signal from the Key Fob, the LED indicator will flash **Green** for **2 seconds**; then will flash **Red** to confirmation the frequency has been stored. Repeat this set when programming multiple Key Fobs.
- 4.) Install **Program Sleeve** (Shunt) on **Pin 2** and **3** to end Programming Mode. **(Fig. 2 & 4)**  
*Note: When in Programming Mode the transmitter must be operated within 3 - 5 seconds to program new code, otherwise the Receiver will resume previous frequency.*
- 5.) You may program up to 4 key fobs to one Receiver. When programming a 5<sup>th</sup> Key fob, the Receiver will drop the 1<sup>st</sup> programmed key fob.

For Warranty and Trouble shooting, please contact KTI Hydraulics, Inc. Service Department (714)556-8818.

**\*\*\*\*\*Wireless Receiver (Control Box) may not operate below 9 Volts\*\*\*\*\***